

centrix[®]
Sense Of Security

DVS SERIES

DIGITAL VIDEO SURVEILLANCE

LITE	1
VIRTUE	2 - 4

HVS SERIES

HYBRID VIDEO SURVEILLANCE

LITE	5 - 7
VIRTUE	8 - 9

HDVS SERIES

HIGH DEFINITION VIDEO SURVEILLANCE

LITE	11 - 12
VIRTUE	13 - 19

VSC SERIES

VIDEO SURVEILLANCE CONNECTIVITY

POWER	20 - 22
SURGE	23
VIDEO	24
UTP	25
VIDEO SWITCH	26
NETWORK SWITCH	27 - 28

ACCESSORIES

HVS SERIES KEYBOARD & BRACKET	10
HDVS SERIES CASING & LENS	16
HDVS SERIES KEYBOARD & BRACKET	18



EFFIO-A IR

IDL30**INFRA RED DOME CAMERA**

- 1/3 INCH SONY EFFIO-A
- 800TVL
- 3.6MM FIXED LENS
- 0 LUX - 20M IR RANGE
- ADAPTIVE TONE REPRODUCTION - EX
- 2D-DNR, 3D-DNR
- DEFOG
- DIGITAL IMAGE STABILIZER
- OSD CONTROL VIA UTC



EFFIO-A WP IR

IWL30**IR WEATHERPROOF CAMERA**

- 1/3 INCH SONY EFFIO-A
- 800TVL
- 3.6MM FIXED LENS
- 0 LUX - 30M IR RANGE
- ADAPTIVE TONE REPRODUCTION - EX
- 2D-DNR, 3D-DNR
- DEFOG
- DIGITAL IMAGE STABILIZER
- IP67 RATING
- OSD CONTROL VIA UTC



EFFIO-V IR TRUE WDR

IDL50**INFRA RED DOME CAMERA**

- 1/3 INCH SONY SUPER HAD II CCD + EFFIO-V
- 800TVL
- DC AUTO IRIS V/F LENS 2.8~12MM
- 0 LUX - 30M IR RANGE
- TRUE WDR
- 2D-DNR, 3D-DNR
- DEFOG
- DIGITAL IMAGE STABILIZER
- OSD CONTROL VIA UTC



EFFIO-V WP IR TRUE WDR

IWL50**IR WEATHERPROOF CAMERA**

- 1/3 INCH SONY SUPER HAD II CCD + EFFIO-V
- 800TVL
- DC AUTO IRIS V/F LENS 2.8~12MM
- 0 LUX - 40M IR RANGE
- TRUE WDR
- 2D-DNR, 3D-DNR
- DEFOG
- DIGITAL IMAGE STABILIZER
- IP67 RATING
- OSD CONTROL VIA UTC



OSD

DV80**D&N DOME CAMERA**

- 1/2.9 INCH SONY CMOS
- 1000TVL
- 3.6MM FIXED LENS
- 0.0001 LUX (SENSE X 256)
- SMART 3D-DNR
- D-WDR
- F-DNR (D-FOG)
- 3-AXIS
- OSD CONTROLLER



OSD

DV80V**VARIFOCAI D&N DOME CAMERA**

- 1/2.9 INCH SONY CMOS
- 1000TVL
- DC AUTO IRIS V/F LENS 2.8~12MM
- 0.0001 LUX (SENSE X 256)
- SMART 3D-DNR
- D-WDR
- F-DNR (D-FOG)
- 3-AXIS
- OSD CONTROLLER



IR OSD

DV100IR**IR DOME CAMERA**

- 1/2.9 INCH SONY CMOS
- 1000TVL
- 4.3MM FIXED LENS
- 0 LUX 15M IR RANGE
- SMART 3D-DNR
- D-WDR
- F-DNR (D-FOG)
- 3 AXIS
- OSD CONTROLLER



IR OSD

DV100IRV**VARIFOCAI IR DOME CAMERA**

- 1/2.9 INCH SONY CMOS
- 1000TVL
- DC AUTO IRIS V/F LENS 2.8~12MM
- 0 LUX 20M IR RANGE
- SMART 3D-DNR
- D-WDR
- F-DNR (D-FOG)
- 3 AXIS
- OSD CONTROLLER

**WV510IR****IR WEATHERPROOF CAMERA**

- 1/2.9 INCH SONY CMOS
- 1000TVL
- 3.6MM FIXED LENS
- 0 LUX 15M IR RANGE
- SMART 3D-DNR
- SMART IR
- IP68 RATING

**WV520IR****IR WEATHERPROOF CAMERA**

- 1/2.9 INCH SONY CMOS
- 1000TVL
- 4.3MM FIXED LENS
- 0 LUX 25M IR RANGE
- SMART 3D-DNR
- SMART IR
- IP68 RATING

**WV530IR****IR WEATHERPROOF CAMERA**

- 1/2.9 INCH SONY CMOS
- 1000TVL
- DC AUTO IRIS V/F LENS 2.8~12MM
- 0 LUX 30M IR RANGE
- SMART 3D-DNR
- SMART IR
- D-WDR
- F-DNR (D-FOG)
- IP68 RATING



RV3004E

4 CHANNELS DVR

- H.264 VIDEO COMPRESSION
- LIVE DISPLAY
- 100 FPS RECORDING@CIF
- 4 IN / 1 RELAY ALARM
- 4 IN / 1 OUT AUDIO
- 1-VGA, 1-CVBS
- 2 SATA HDD (MAX 4TB EACH)

LINUX OS

RV3008E

8 CHANNELS DVR

- H.264 VIDEO COMPRESSION
- LIVE DISPLAY
- 200 FPS RECORDING@CIF
- 8 IN / 2 RELAY ALARM
- 4 IN / 1 OUT / HDMI AUDIO
- 1-VGA, 1-CVBS
- 2 SATA HDD (MAX 4TB EACH)

LINUX OS

RV3016E

16 CHANNELS DVR

- H.264 VIDEO COMPRESSION
- LIVE DISPLAY
- 400 FPS RECORDING@CIF
- 16 IN / 1 RELAY ALARM
- 8 IN / 1 OUT / HDMI AUDIO
- 1-VGA, 1-CVBS
- 2 SATA HDD (MAX 4TB EACH)

LINUX OS

RV7008P

8 CHANNELS DVR

- PENTAPLEX OPERATION
- LIVE DISPLAY
- 200 FPS RECORDING@D1
- 8 IN / 4 RELAY ALARM
- 8 IN / 1 OUT AUDIO
- 1-HDMI, 1-VGA, 1-CVBS, 4-SPOT 8-LOOP
- 3 SATA HDD (MAX 4TB EACH)
- 1 ODD

LINUX OS

RV7016P

16 CHANNELS DVR

- PENTAPLEX OPERATION
- LIVE DISPLAY
- 400 FPS RECORDING@D1
- 16 IN / 4 RELAY ALARM
- 16 IN / 1 OUT AUDIO
- 1-HDMI, 1-VGA, 1-CVBS, 4-SPOT 16-LOOP
- 3 SATA HDD, (MAX 4TB EACH)
- 1 ODD

MOBILE VIEWING



**IHD30****IR DOME CAMERA**

- 1/3 INCH IMX 238 CMOS
- 720P @ AHD; 960H @ ANALOG
- 3.6MM FIXED LENS
- 0 LUX - 20M IR RANGE
- IR CUT REMOVABLE (ICR)

**IHD60****IR DOME CAMERA**

- 1/2.8 INCH IMX 322 CMOS
- 1080P @ AHD; 960H @ ANALOG
- 3.6MM FIXED LENS
- 0 LUX - 20M IR RANGE
- IR CUT REMOVABLE (ICR)

**IHW30****IR WEATHERPROOF CAMERA**

- 1/3 INCH IMX 238 CMOS
- 720P @ AHD; 960H @ ANALOG
- 3.6MM FIXED LENS
- 0 LUX - 30M IR RANGE
- IR CUT REMOVABLE (ICR)

**IHW60****IR WEATHERPROOF CAMERA**

- 1/2.8 INCH IMX 322 CMOS
- 1080P @ AHD; 960H @ ANALOG
- 3.6MM FIXED LENS
- 0 LUX - 30M IR RANGE
- IR CUT REMOVABLE (ICR)

**IHD50****IR DOME CAMERA**

- 1/3 INCH IMX 238 CMOS
- 720P @ AHD; 960H @ ANALOG
- 2.8-12MM VARIFOCAL LENS
- 0 LUX - 30M IR RANGE
- IR CUT REMOVABLE (ICR)

**IHD80****IR DOME CAMERA**

- 1/2.8 INCH IMX 322 CMOS
- 1080P @ AHD; 960H @ ANALOG
- 2.8-12MM VARIFOCAL LENS
- 0 LUX - 30M IR RANGE
- IR CUT REMOVABLE (ICR)

**IHW50****IR WEATHERPROOF CAMERA**

- 1/3 INCH IMX 238 CMOS
- 720P @ AHD; 960H @ ANALOG
- 2.8-12MM VARIFOCAL LENS
- 0 LUX - 40M IR RANGE
- IR CUT REMOVABLE (ICR)

**IHW80****IR WEATHERPROOF CAMERA**

- 1/2.8 INCH IMX 322 CMOS
- 1080P @ AHD; 960H @ ANALOG
- 2.8-12MM VARIFOCAL LENS
- 0 LUX - 40M IR RANGE
- IR CUT REMOVABLE (ICR)



LINUX OS 720p

HVR1216

16 CHANNELS HVR

- MULTI-MODE INPUTS (ANALOG/AHD/IP)
- 1080P HDMI / VGA OUTPUT
- 4CH * 720P @ 25 FPS PLAYBACK
- SUPPORT P2P TECHNOLOGY
- SUPPORT 3D BARCODE SCANNING
- FULL 1080P RECORDING FOR IP
- REAL TIME 720P RECORDING FOR ALL CHANNELS (AHD)
- 2 SATA HDD



LINUX OS 720p

HVR1416

16 CHANNELS HVR

- MULTI-MODE INPUTS (ANALOG/AHD/IP)
- 1080P HDMI / VGA OUTPUT
- 8CH * 720P @ 25 FPS PLAYBACK
- SUPPORT P2P TECHNOLOGY
- SUPPORT 3D BARCODE SCANNING
- FULL 1080P RECORDING FOR IP
- REAL TIME 720P RECORDING FOR ALL CHANNELS (AHD)
- 4 SATA HDD



LINUX OS 1080p

HVR2104H

4 CHANNELS HVR

- MULTI-MODE INPUTS (ANALOG/AHD/IP)
- 1080P HDMI / VGA OUTPUT
- 4CH * 1080P @ 12 FPS PLAYBACK
- SUPPORT P2P TECHNOLOGY
- SUPPORT 3D BARCODE SCANNING
- FULL 1080P RECORDING FOR IP
- HALF FRAME 1080P RECORDING FOR ALL CHANNELS (AHD)
- 1 SATA HDD



LINUX OS 1080p

HVR2208H

8 CHANNELS HVR

- MULTI-MODE INPUTS (ANALOG/AHD/IP)
- 1080P HDMI / VGA OUTPUT
- 4CH * 1080P @ 12 FPS PLAYBACK
- SUPPORT P2P TECHNOLOGY
- SUPPORT 3D BARCODE SCANNING
- FULL 1080P RECORDING FOR IP
- HALF FRAME 1080P RECORDING FOR ALL CHANNELS (AHD)
- 2 SATA HDD



LINUX OS 1080p

HVR2216H

16 CHANNELS HVR

- MULTI-MODE INPUTS (ANALOG/AHD/IP)
- 1080P HDMI / VGA OUTPUT
- 8CH * 1080P @ 12 FPS PLAYBACK
- SUPPORT P2P TECHNOLOGY
- SUPPORT 3D BARCODE SCANNING
- FULL 1080P RECORDING FOR IP
- HALF FRAME 1080P RECORDING FOR ALL CHANNELS (AHD)
- 2 SATA HDD



LINUX OS 1080p

HVR2416H

16 CHANNELS HVR

- MULTI-MODE INPUTS (ANALOG/AHD/IP)
- 1080P HDMI / VGA OUTPUT
- 8CH * 1080P @ 12 FPS PLAYBACK
- SUPPORT P2P TECHNOLOGY
- SUPPORT 3D BARCODE SCANNING
- FULL 1080P RECORDING FOR IP
- HALF FRAME 1080P RECORDING FOR ALL CHANNELS (AHD)
- 4 SATA HDD



IR 1080p WDR

IVD500

MICRO DOME CAMERA

- 1/3" PANASONIC CMOS SENSOR
- 1080P AHD-H
- 3.6MM FIXED LENS
- 2PCS HIGH POWERED IR LEDS
- 15M IR DISTANCE
- TRUE WDR
- IP66 RATING



IR 1080p WDR

IVD300

IR DOME CAMERA

- 1/3" PANASONIC CMOS SENSOR
- 1080P AHD-H
- 3.6MM FIXED LENS
- 2PCS HIGH POWERED IR LEDS
- 20M IR DISTANCE
- TRUE WDR



IR 1080p WDR

IVD300F

IR DOME CAMERA

- 1/3" PANASONIC CMOS SENSOR
- 1080P AHD-H
- 2.8MM-12MM VARIFOCAL LENS, P-IRIS
- 24PCS IR LEDS
- 30M IR DISTANCE
- TRUE WDR



IR 1080p WDR

IVW600F

IR WEATHERPROOF CAMERA

- 1/3" PANASONIC CMOS SENSOR
- 1080P AHD-H
- 2.8MM-12MM VARIFOCAL LENS, P-IRIS
- 20PCS IR LEDS
- 25M IR DISTANCE
- TRUE WDR
- IP66 RATING



IR 1080p WDR

IVW700F

IR WEATHERPROOF CAMERA

- 1/3" PANASONIC CMOS SENSOR
- 1080P AHD-H
- 6MM-50MM VARIFOCAL LENS, P-IRIS
- 35PCS IR LEDS
- 40M IR DISTANCE
- TRUE WDR
- IP66 RATING



WP 1080p WDR

SHD10X

AHD SPEED DOME CAMERA

- 1/3 INCH PANASONIC CMOS
- 1080P @ AHD; 960H @ ANALOG
- 10X OPTICAL, 32X DIGITAL
- 5.1-51MM ZOOM LENS
- IR CUT REMOVABLE (ICR)
- 0.0001 LUX
- IP66 RATING



WP 1080p WDR

SHD20X

AHD SPEED DOME CAMERA

- 1/2.8 INCH SONY EXMOR CMOS
- 1080P @ AHD; 960H @ ANALOG
- 20X OPTICAL, 16X DIGITAL
- 4.45-89MM ZOOM LENS
- IR CUT REMOVABLE (ICR)
- 0.0005 LUX
- IP66 RATING



WP 1080p WDR

SHD30X

AHD SPEED DOME CAMERA

- 1/2.8 INCH SONY EXMOR CMOS
- 1080P @ AHD; 960H @ ANALOG
- 32X OPTICAL, 16X DIGITAL
- 4.45-89MM ZOOM LENS
- IR CUT REMOVABLE (ICR)
- 0.0005 LUX
- IP66 RATING



WP IR 1080p WDR

SHD30IRX

AHD IR SPEED DOME CAMERA

- 1/2.8 INCH SONY EXMOR CMOS
- 1080P @ AHD; 960H @ ANALOG
- 30X OPTICAL, 20X DIGITAL
- 4.3-129MM ZOOM LENS
- IR CUT REMOVABLE (ICR)
- 0LUX (IR RANGE 150M)
- IP66 RATING



KBJ800

PTZ KEYBOARD CONTROLLER

- BACK LIGHT LCD
- 3-AXIS JOYSTICK CONTROLLER
- CONTROLLER FOR PAN, TILT, ZOOM
- CONTROLS UP TO 255 CAMERA
- PROPRIETARY PROTOCOL



KBJ1000

PTZ KEYBOARD CONTROLLER

- GRAPHICAL LCD SCREEN
- 3-AXIS JOYSTICK CONTROLLER
- CONTROLLER FOR PAN, TILT, ZOOM
- CONTROLS UP TO 255 CAMERA
- MULTI PROTOCOL



SV30ICB

IN-CEILING MOUNT BRACKET

- INDOOR SPEED DOMES



SV30EWP

WALL MOUNT BRACKET

- OUTDOOR SPEED DOMES



SV30CMA

CORNER MOUNT ADAPTER

- OUTDOOR SPEED DOMES



SV30PMA

POLE MOUNT ADAPTER

- OUTDOOR SPEED DOMES



SV30ECP

PENDANT MOUNT BRACKET

- OUTDOOR SPEED DOMES



IPD30

IR DOME CAMERA

- 1/3 INCH SONY 1.4M IMX 238 CMOS
- HI SILICONE DSP
- RESOLUTION : 1280 X 1024(1.3MP)
- 3.6MM FIXED LENS
- 0 LUX - 20M IR RANGE



IPW30

IR WEATHERPROOF CAMERA

- 1/3 INCH SONY 1.4M IMX 238 CMOS
- HI SILICONE DSP
- RESOLUTION : 1280 X 1024(1.3MP)
- 3.6MM FIXED LENS
- 0 LUX - 30M IR RANGE



IPD50

IR DOME CAMERA

- 1/3 INCH SONY 2M IMX 322 CMOS
- HI SILICONE DSP
- RESOLUTION : 1920 X 1080(2MP)
- 2.8-12MM VARIFOCAL LENS
- 0 LUX - 40M IR RANGE



IPW50

IR WEATHERPROOF CAMERA

- 1/3 INCH SONY 2M IMX 322 CMOS
- HI SILICONE DSP
- RESOLUTION : 1920 X 1080(2MP)
- 2.8-12MM VARIFOCAL LENS
- 0 LUX - 40M IR RANGE



IPS18X

MEDIUM SPEED DOME CAMERA

- 1/3 INCH SONY IMX 322
- RESOLUTION: 1920 X 1020 (2MP)
- DUAL STREAM SUPPORT
- 4.3 MM - 77.4 MM VARIFOCAL LENS
- 18X OPTICAL, 10X DIGITAL ZOOM
- IR-LED 8 NOS, 100M RANGE



LINUX OS

BNV4**4 CHANNELS NVR**

- SUPPORT DUAL STREAMS
- 4CH REALTIME RECORDING @ 1080P
- SUPPORT 1.3MP, 1080P RESOLUTION
- SUPPORT P2P TECHNOLOGY
- 1080P HDMI / VGA OUTPUT
- 1 SATA 3.5" HDD



LINUX OS

BNV8**8 CHANNELS NVR**

- SUPPORT DUAL STREAMS
- 8CH REALTIME RECORDING @ 1080P
- SUPPORT 1.3MP, 1080P, 3MP RESOLUTION
- SUPPORT P2P TECHNOLOGY
- 1080P HDMI / VGA OUTPUT
- 2 SATA 3.5" HDD



LINUX OS

BNV16**16 CHANNELS NVR**

- SUPPORT DUAL STREAMS
- 16CH REALTIME RECORDING @ 1080P
- SUPPORT 1.3MP, 1080P, 3MP, 5MP RESOLUTION
- SUPPORT P2P TECHNOLOGY
- 1080P HDMI / VGA OUTPUT
- 2 SATA 3.5" HDD



LINUX OS

BNV24**24 CHANNELS NVR**

- SUPPORT DUAL STREAMS
- 24CH REALTIME RECORDING @ 1080P
- SUPPORT 1.3MP, 1080P, 3MP, 5MP RESOLUTION
- SUPPORT P2P TECHNOLOGY
- HDMI / VGA OUTPUT
- 8 SATA 3.5" HDD



WP WDR ICR

MD30IR

MINI IR DOME CAMERA

- RESOLUTION: 2048 X 1536 (3MP)
- TRIPLE STREAM SUPPORT
- 2.8MM FIXED LENS
- 25M IR RANGE
- WIDE DYNAMIC RANGE
- 3D-DNR
- MICRO SD



WP WDR ICR

MW30IR

MINI IR WEATHERPROOF CAMERA

- RESOLUTION: 2048 X 1536 (3MP)
- TRIPLE STREAM SUPPORT
- 2.8MM FIXED LENS
- 25M IR RANGE
- WIDE DYNAMIC RANGE
- 3D-DNR
- MICRO SD



ICR TRUE WDR 1080p

D20X

DOME CAMERA

- 1/2.8 INCH SONY PROGRESSIVE CMOS
- XARINA DSP
- RESOLUTION: 1920 X 1080 (2MP)
- QUAD STREAM SUPPORT
- 3.5-10MM MOTORIZED LENS
- TRUE WDR
- 3D-DNR
- MICRO SD

OPTIONAL :
- IR LED 24NOS, 25M VISIBILITY RANGE
850NM



ICR TRUE WDR 1080p

V20X

VANDAL DOME CAMERA

- 1/2.8 INCH SONY PROGRESSIVE CMOS
- XARINA DSP
- RESOLUTION: 1920 X 1080 (2MP)
- QUAD STREAM SUPPORT
- 3.5-10MM MOTORIZED LENS
- TRUE WDR
- 3D-DNR
- MICRO SD

OPTIONAL :
- IR LED 24NOS, 25M VISIBILITY RANGE
850NM
- HEATER & BLOWER
- OUTDOOR ENCLOSURE



ICR TRUE WDR 1080p

F20X

BOX CAMERA

- 1/2.8 INCH SONY PROGRESSIVE CMOS
- XARINA DSP
- RESOLUTION: 1920 X 1080 (2MP)
- QUAD STREAM SUPPORT
- TRUE WDR
- 3D-DNR
- MICRO SD

OPTIONAL :
- 24VAC POWER INPUT



WP ICR TRUE WDR 1080p

W20X

WEATHERPROOF CAMERA

- 1/2.8 INCH SONY PROGRESSIVE CMOS
- XARINA DSP
- RESOLUTION: 1920 X 1080 (2MP)
- QUAD STREAM SUPPORT
- 3.5-10MM MOTORIZED LENS
- TRUE WDR
- 3D-DNR
- MICRO SD

OPTIONAL :
- HEATER ONLY



WDR ICR

D60

DOME CAMERA

- SONY SA SENSOR IMX-178
- 1/1.8 INCH SONY PROGRESSIVE CMOS
- RESOLUTION: 3072 X 2048 (6MP)
- QUAD STREAM SUPPORT
- 3-8MM MOTORIZED LENS
- H.264 6M @ 30FPS VIDEO STREAM

OPTIONAL :
- IR LED 24NOS, 25M VISIBILITY RANGE
850NM



WDR ICR

F60

BOX CAMERA

- SONY SA SENSOR IMX-178
- 1/1.8 INCH SONY PROGRESSIVE CMOS
- RESOLUTION: 3072 X 2048 (6MP)
- QUAD STREAM SUPPORT
- H.264 6M @ 30FPS VIDEO STREAM
- 0.04 LUX @ F1.8

OPTIONAL :
- 24VAC POWER INPUT



WP WDR ICR

W60

WEATHERPROOF CAMERA

- SONY SA SENSOR IMX-178
- 1/1.8 INCH SONY PROGRESSIVE CMOS
- RESOLUTION: 3072 X 2048 (6MP)
- QUAD STREAM SUPPORT
- 3-8MM MOTORIZED LENS
- H.264 6M @ 30FPS VIDEO STREAM

OPTIONAL :
- HEATER ONLY



WDR ICR

Q60

PANORAMIC CAMERA

- SONY SA SENSOR IMX-178
- 1/1.8 INCH SONY PROGRESSIVE CMOS
- RESOLUTION: 3072 X 2048 (6MP)
- QUAD STREAM SUPPORT
- 1.05MM 1/2.5 INCH FISH EYE LENS
- H.264 6M @ 30FPS VIDEO STREAM
- 0.04 LUX @ F2.8

**EV40L / EV40LHB****ENCLOSURE**

- OPTIONAL HEATER & BLOWER (EV40LHB)
- COMPLETE WITH CABLE MANAGEMENT
- DIE-CAST & EXTRUDED ALUMINIUM
- INDOOR/OUTDOOR APPLICATION

**BV10 / BV40****WALL MOUNT CAMERA BRACKET
WALL MOUNT BRACKET FOR EV40L**

- ABS PLASTIC MATERIAL (BV10)
- STEEL MATERIAL (BV40)
- INDOOR/OUTDOOR APPLICATION

**M13F02820IR****MONO-FOCAL LENS (IR)**

- MEGAPIXEL LENS
- FOCAL LENGTH 2.8MM

**M13VD309IR****AUTO IRIS LENS (IR)**

- MEGAPIXEL LENS
- FOCAL LENGTH 3 - 9MM

**M13VD550IR****AUTO IRIS LENS (IR)**

- MEGAPIXEL LENS
- FOCAL LENGTH 5 - 50MM



WDR ICR 1080p

SI20-20x (INDOOR)

HIGH SPEED DOME CAMERA

- RESOLUTION: 1920 x 1080
- QUAD STREAM SUPPORT
- 20X OPTICAL, 10X DIGITAL
- WIDE DYNAMIC RANGE
- 3D-DNR
- MICRO SD



WDR ICR 1080p

SI20-30x (INDOOR)

HIGH SPEED DOME CAMERA

- RESOLUTION: 1920 x 1080
- QUAD STREAM SUPPORT
- 30X OPTICAL, 10X DIGITAL
- WIDE DYNAMIC RANGE
- 3D-DNR
- MICRO SD



WP WDR ICR 1080p

SE20-20x (OUTDOOR)

HIGH SPEED DOME CAMERA

- RESOLUTION: 1920 x 1080
- QUAD STREAM SUPPORT
- 20X OPTICAL, 10X DIGITAL
- WIDE DYNAMIC RANGE
- 3D-DNR
- MICRO SD
- IP66 RATING



WP WDR ICR 1080p

SE20-30x (OUTDOOR)

HIGH SPEED DOME CAMERA

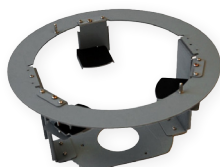
- RESOLUTION: 1920 x 1080
- QUAD STREAM SUPPORT
- 30X OPTICAL, 10X DIGITAL
- WIDE DYNAMIC RANGE
- 3D-DNR
- MICRO SD
- IP66 RATING



KBJ2500IP

PTZ KEYBOARD CONTROLLER

- 8 INCH DIGITAL DISPLAY
- 9CH PREVIEW SIMULTANEOUSLY
- SUPPORT VGA AND 1080 HD OUTPUT
- 3-AXIS JOYSTICK CONTROLLER
- CONTROLLER FOR PAN, TILT, ZOOM
- CONTROLS UP TO 255 CAMERA
- MULTI PROTOCOL



SA

IN-CELLING MOUNT

- SE20 / SI20



SB

PENDANT MOUNT

- SE20 / SI20
- 50CM

SC

PENDANT MOUNT

- SE20 / SI20
- 25CM



SD

STANDARD WALL MOUNT

- SE20 / SI20



SE

CORNER MOUNT ADAPTER

- SE20 / SI20



LINUX OS

NVS80E

8 CHANNELS NVR

- DUAL STREAM FOR MANAGING BANDWIDTH
- 1080P HDMI OUTPUT
- ZERO PORT FORWARDING
- UP TO 128 CH REMOTE LIVEVIEW
- PLAYBACK WITH 5 INTELLIGENT SEARCH
- BUILT-IN MOTION DETECTION
- 2 x 3.5" HDD
- 80 MBPS TOTAL BITRATE
- RAID 0,1



LINUX OS

NVS160E

16 CHANNELS NVR

- DUAL STREAM FOR MANAGING BANDWIDTH
- 1080P HDMI OUTPUT
- ZERO PORT FORWARDING
- UP TO 128 CH REMOTE LIVEVIEW
- PLAYBACK WITH 5 INTELLIGENT SEARCH
- BUILT-IN MOTION DETECTION
- 2 x 3.5" HDD
- 80 MBPS TOTAL BITRATE
- RAID 0,1



LINUX OS

NVS160R

16 CHANNELS NVR

- DUAL STREAM FOR MANAGING BANDWIDTH
- 1080P HDMI OUTPUT
- ZERO PORT FORWARDING
- UP TO 128 CH REMOTE LIVEVIEW
- PLAYBACK WITH 5 INTELLIGENT SEARCH
- 8 x 3.5" HDD
- 80 MBPS TOTAL BITRATE
- RAID 0,1,5,10

**PSA12-1A****POWER ADAPTER**

- 12 VDC
- 90 - 240 VAC INPUT
- 1 AMP OUTPUT
- 12W

OPTIONAL:

- EU 2 PIN
- USA 2 PIN

**PSA12-2A****POWER ADAPTER**

- 12 VDC
- 100 - 240 VAC INPUT
- 2 AMP OUTPUT
- 24W

OPTIONAL:

- EU 2 PIN
- USA 2 PIN

**PSA12-5A****POWER ADAPTER**

- 12 VDC
- 100 - 240 VAC INPUT
- 5 AMP OUTPUT
- 60W

OPTIONAL:

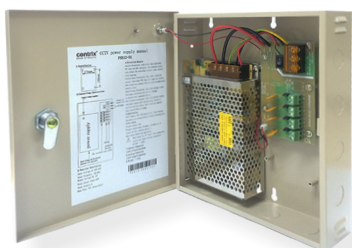
- EU 2 PIN
- USA 2 PIN



PSB24-3A

POWER SUPPLY BOX

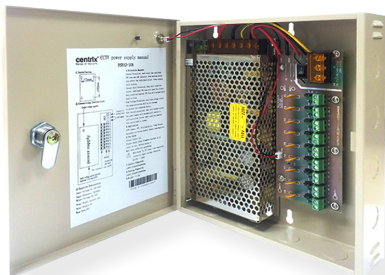
- 24 VAC
- 240 VAC INPUT
- 3 AMP OUTPUT
- 72W



PSB12-5A

POWER SUPPLY BOX

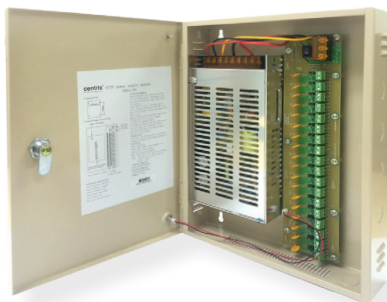
- PTC FUSE
- 12 VDC
- 100 - 264 VAC INPUT
- 5 AMP OUTPUT
- 60W



PSB12-10A

POWER SUPPLY BOX

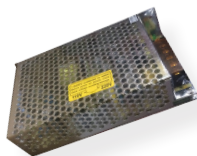
- PTC FUSE
- 12 VDC
- 100 - 264 VAC INPUT
- 10 AMP OUTPUT
- 120W



PSB12-20A

POWER SUPPLY BOX

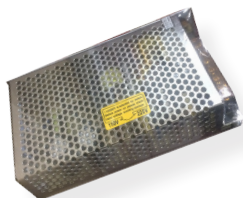
- PTC FUSE
- 12 VDC
- 100 - 264 VAC INPUT
- 20 AMP OUTPUT
- 240W



PSE12-5A

SWITCHING POWER SUPPLY

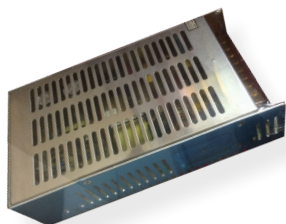
- 12 VDC
- 100 - 264 VAC INPUT
- 5 AMP OUTPUT
- 60W



PSE12-10A

SWITCHING POWER SUPPLY

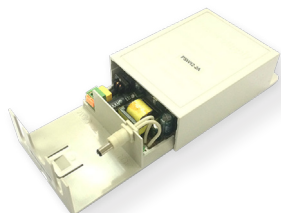
- 12 VDC
- 100 - 264 VAC INPUT
- 10 AMP OUTPUT
- 120W



PSE12-20A

SWITCHING POWER SUPPLY

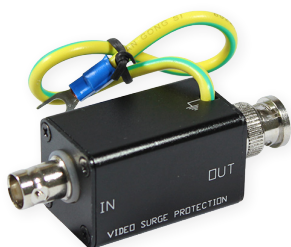
- 12 VDC
- 100 - 264 VAC INPUT
- 20 AMP OUTPUT
- 240W



PSW12-2A

WATERPROOF POWER SUPPLY

- 12 VDC
- 100 - 240 VAC INPUT
- 2 AMP OUTPUT
- 24W
- IP66 RATING



SPV1

VIDEO SURGE PROTECTOR

- 1CHANNEL
- 5 VDC
- 10KA



SPVD-DC

VIDEO, POWER, DATA SURGE PROTECTOR

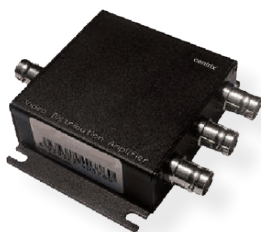
- 1CHANNEL
- 12/24 VDC/VAC
- 10KA



SPOE

POE SURGE PROTECTOR

- 1CHANNEL
- 48 VDC (802.3af / 802.3at)
- 10KA



VDA1

VIDEO DISTRIBUTION AMPLIFIER

- 1 CHANNEL INPUT
- 3 CHANNEL OUTPUT
- 12 VDC



GL1

GROUND LOOP ISOLATOR

- 1 CHANNEL INPUT
- ELIMINATE INTERFERENCE
- BUILT-IN TRANSIENT PROTECTION



VGA1

VGA EXTENDER

- 1 CHANNEL INPUT
- VGA, SVGA, SXGA COMPATIBLE
- MAX 200M
- 12 VDC



IPX1

IP VIDEO EXTENDER

- 1 CHANNEL
- 10/100MBPS
- MAXIMUM DISTANCE : 5000M
- 12 VDC



PA1

PASSIVE AHD VIDEO TRANSMITTER/TRANSCIEVER

- 1 CHANNEL INPUT
- 200M PASSIVE TRANSMITTER/TRANSCIEVER
- SUPPORT 720P (25 / 30FPS) AND 1080P (25 / 30FPS)
- BUILT-IN TRANSIENT PROTECTION



PV1

PASSIVE VIDEO TRANSCIEVER

- 1 CHANNEL INPUT
- 300M PASSIVE TRANSCIEVER
- 800M ACTIVE RECEIVER
- BUILT-IN TRANSIENT PROTECTION



PV2

PASSIVE VIDEO, POWER & DATA TRANSMITTER

- 1 CHANNEL INPUT
- 300M PASSIVE TRANSCIEVER
- 800M ACTIVE RECEIVER (VIDEO ONLY)
- BUILT-IN TRANSIENT PROTECTION



AV1

ACTIVE VIDEO TRANSMITTER

- 1 CHANNEL INPUT
- 800M PASSIVE RECEIVER
- 1500M ACTIVE RECEIVER
- BUILT-IN TRANSIENT PROTECTION
- GROUND LOOP ISOLATION
- 12 VDC / 24 VAC



AV2

ACTIVE VIDEO RECEIVER

- 1 CHANNEL INPUT
- 800M PASSIVE TRANSCIEVER
- 1500M ACTIVE TRANSMITTER
- BUILT-IN TRANSIENT PROTECTION
- GROUND LOOP ISOLATION
- 12 VDC / 24 VAC



PVS8

PASSIVE VIDEO RECEIVER SWITCH

- 8 CHANNEL INPUT
- BUILT-IN SUPPRESSION
- BUILT-IN TRANSIENT PROTECTION
- 300M PASSIVE TRANSCEIVER
- 800M ACTIVE TRANSMITTER



PVS16

PASSIVE VIDEO RECEIVER SWITCH

- 16 CHANNEL INPUT
- BUILT-IN SUPPRESSION
- BUILT-IN TRANSIENT PROTECTION
- 300M PASSIVE TRANSCEIVER
- 800M ACTIVE TRANSMITTER



AVS8

ACTIVE VIDEO RECEIVER SWITCH

- 8 CHANNEL INPUT
- BUILT-IN TRANSIENT PROTECTION
- GROUND LOOP ISOLATION
- 800M PASSIVE TRANSCEIVER
- 1500M ACTIVE TRANSMITTER
- 240 VAC



AVS16

ACTIVE VIDEO RECEIVER SWITCH

- 16 CHANNEL INPUT
- BUILT-IN TRANSIENT PROTECTION
- GROUND LOOP ISOLATION
- 1200M PASSIVE TRANSCEIVER
- 1800M ACTIVE TRANSMITTER
- 240 VAC

PASSIVE TRANSMITTER

TRANSMITTER END	TRANSMITTER MODEL	NO. CAMERA	MAX DISTANCE	RECEIVER MODEL	RECEIVER END
PASSIVE	PV1 / PV2	1	300M	PV1 / PV2	PASSIVE
PASSIVE	PV1 / PV2	1	800M	AV2	ACTIVE
PASSIVE	PV1 / PV2	1 TO 8	300M	PVS8	PASSTIVE
PASSIVE	PV1 / PV2	1 TO 8	800M	AVS8	ACTIVE
PASSIVE	PV1 / PV2	1 TO 16	300M	PVS16	PASSIVE
PASSIVE	PV1 / PV2	1 TO 16	1200M	AVS16	ACTIVE

ACTIVE TRANSMITTER

TRANSMITTER END	TRANSMITTER MODEL	NO. CAMERA	MAX DISTANCE	RECEIVER MODEL	RECEIVER END
ACTIVE	AV1	1	800M	PV1 / PV2	PASSIVE
ACTIVE	AV1	1	1500M	AV2	ACTIVE
ACTIVE	AV1	1 TO 8	800M	PVS8	PASSTIVE
ACTIVE	AV1	1 TO 8	1500M	AVS8	ACTIVE
ACTIVE	AV1	1 TO 16	800M	PVS16	PASSIVE
ACTIVE	AV1	1 TO 16	1800M	AVS16	ACTIVE

* All distance stated are for Video Transmittion only.



SW4P

4CH POE SWITCH

- 1 PORT X 100 MBPS
- 4 POE PORT X 100 MBPS
- TRANSMISSION DISTANCE UP TO 100M (CAT5 / 5E / 6)
- TRANSMISSION SPEED 10 / 100 MBPS



SW8P

8CH POE SWITCH

- 1 PORT X 100 MBPS
- 8 POE PORT X 100 MBPS
- TRANSMISSION DISTANCE UP TO 100M (CAT5 / 5E / 6)
- TRANSMISSION SPEED 10 / 100 MBPS



SW4FP

4CH POE SWITCH

- 1 SFP PORT X 100 MBPS
- 1 ETHERNET PORT X 100 MBPS
- 4 POE PORT X 100 MBPS
- TRANSMISSION DISTANCE UP TO 150M (CAT 5E)
- TRANSMISSION SPEED 10 / 100 MBPS
- REDUNDANT POWER DESIGN



SW8FP

8CH POE SWITCH

- 1 SFP PORT X 1000 MBPS
- 1 ETHERNET PORT X 1000 MBPS
- 8 POE PORT X 100 MBPS
- TRANSMISSION DISTANCE UP TO 150M (CAT 5E)
- TRANSMISSION SPEED 10 / 100 / 1000 MBPS
- REDUNDANT POWER DESIGN



SW24FP

24CH POE SWITCH

- 2 SFP PORT X 1000 MBPS
- 2 ETHERNET PORT X 1000 MBPS
- 24 POE PORT X 100 MBPS
- TRANSMISSION DISTANCE :
 - 100M UPLINK PORTS
 - 150M 24 POE PORTS
- TRANSMISSION SPEED 10 / 100 / 1000 MBPS



SW24M

24CH MODULAR GIGABIT SWITCH

- 2 SFP PORT X 1000 MBPS
- 2 ETHERNET PORT X 1000 MBPS
- MODULAR COMBINATION:
8 GIGABIT FIBER / 8 GIGABIT ETHERNET
- TRANSMISSION DISTANCE:
ETHERNET PORT : 100M
SFP PORT : UP TO 20KM
- TRANSMISSION SPEED 10 / 100 / 1000 MBPS



M8F

8CH FIBER OPTIC MODULE

- 8 SFP PORT X 1000 MBPS
- TRANSMISSION DISTANCE :
UP TO 20KM / PORT
- TRANSMISSION SPEED 10 / 100 / 1000 MBPS



M8G

8CH GIGABIT ETHERNET MODULE

- 8 ETHERNET PORT X 1000 MBPS
- TRANSMISSION DISTANCE :
UP TO 100M / PORT
- TRANSMISSION SPEED 10 / 100 / 1000 MBPS



1.25G SFP

1.2 GBPS SFP MODULE (PAIR)

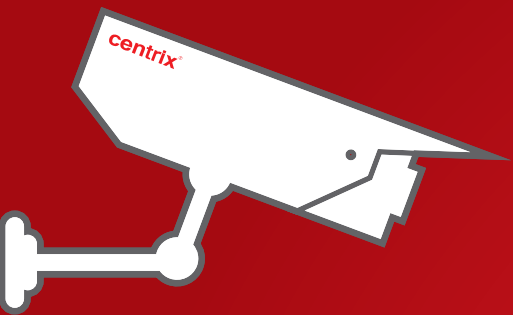
- SINGLE MODE
- SINGLE FIBER
- LC PORT
- TRANSMISSION DISTANCE :20KM
- TRANSMISSION SPEED 1.25GBPS



155M SFP

155 MBPS SFP MODULE (PAIR)

- SINGLE MODE
- SINGLE FIBER
- 155 MBPS
- TRANSMISSION DISTANCE :20KM
- TRANSMISSION SPEED 155MBPS



24

HOUR
CCTV
SURVEILLANCE



Retail



Transportation



Industrial



Education



Banking



Hospitality



Government



Residential

www.centrixsecurity.com